



# NBC TOWER

Penthouse Opportunity



**CUSHMAN &  
WAKEFIELD**

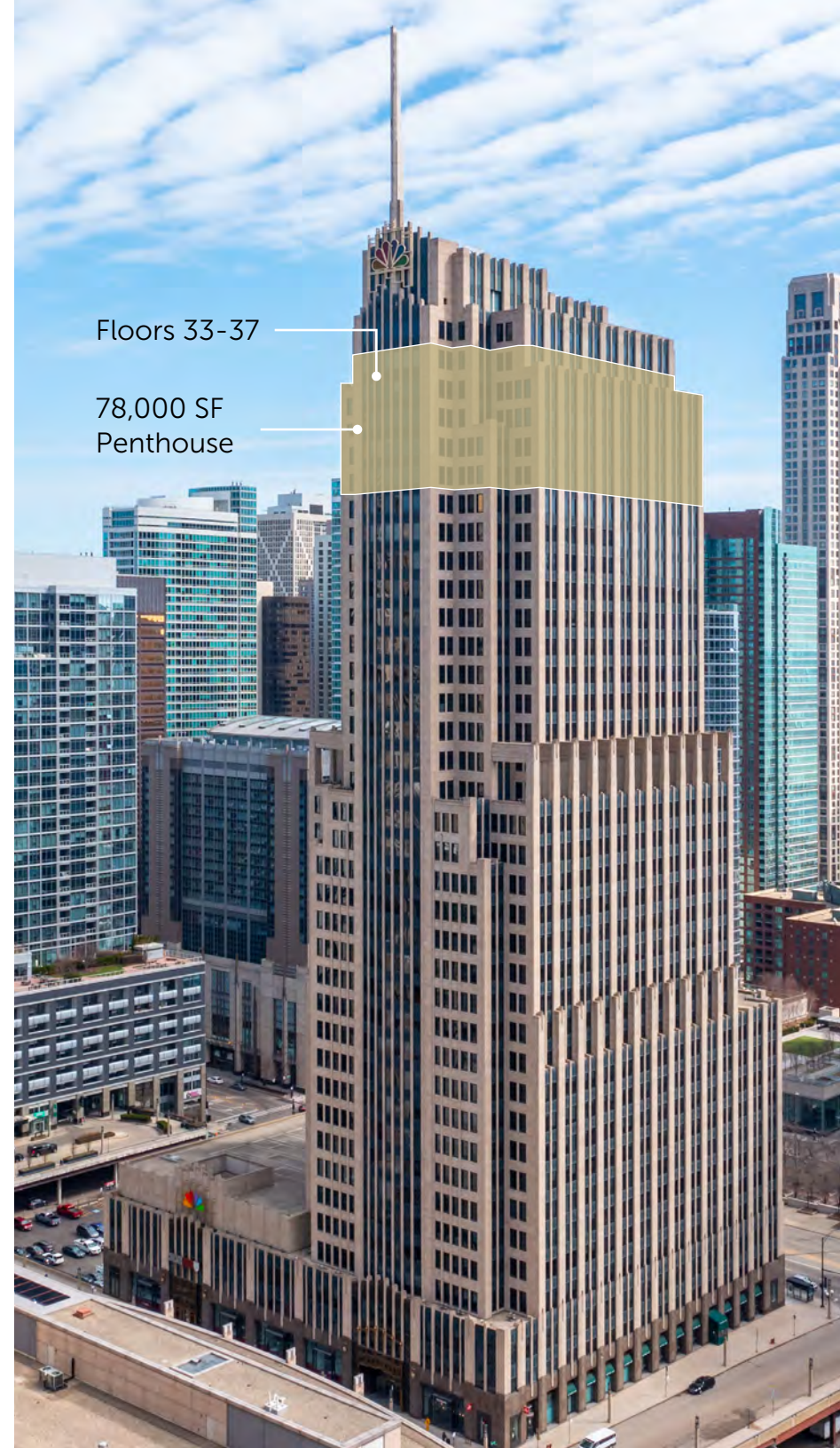
455 N. Cityfront Plaza | Chicago, IL

**METROPOLIS**

# For the First Time— A Unique Opportunity Awaits

NBC Tower brings together postmodern architecture and a coveted riverfront address to deliver a workplace experience unlike any other and for the first time since completion, the penthouse returns to the market.

With light-filled, column-free layouts, sweeping skyline views, and a suite of high-performance amenities steps from the city's most vibrant neighborhoods, NBC Tower stands as a destination built for connection, inspiration and lasting impact.



Floors 33-37

78,000 SF  
Penthouse





# Conference Center

Two separate fully equipped  
conference rooms (8-50 people)

Reception & lounge area

Caterer-friendly kitchen



# Fitness Center

State-of-the-art Precor equipment

Peloton Bikes

Locker room with showers & towel service



# The Golf Club

Modern lounge with full swing golf simulator

Wet bar, televisions, music system & comfortable seating



# The Room

Accommodates 20–40 individuals

Wet bar with refrigeration, barware & dishwasher

Dual-turntable DJ booth, private soundproof space equipped with an electric guitar and drum set, all with sound system connectivity

Accessible to tenants during the day, with private reservations available after hours



# On-Site Retail

Cityfront Cafe – made-to-order breakfast and lunch & grab-n-go options

Tower Espresso, offering Lavazza coffee, pastries, breakfast and lunch

24-hour lounge with vending



# Access

Michigan Ave.  
Shopping District



Divvy Bike  
Station



Divvy Bike  
Station

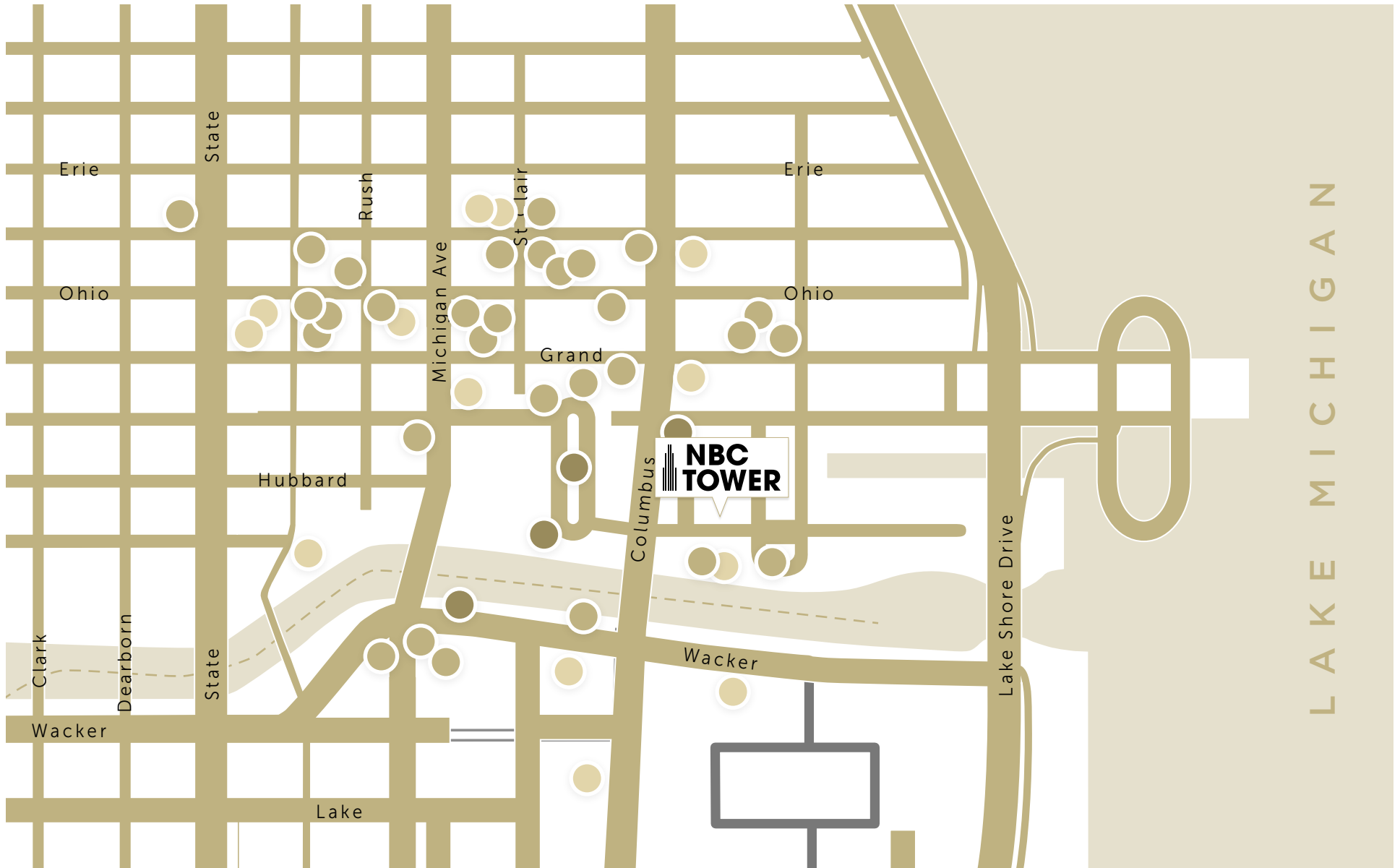
River Walk

Lake Shore Dr.

Lake  
Michigan

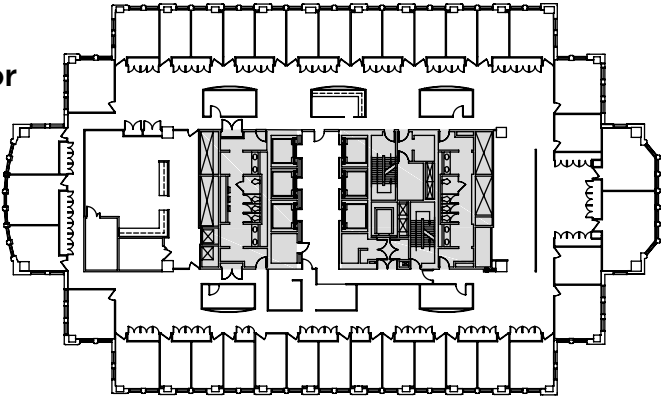
# Location

35+ retail, 50+ dining, 50+ hotels  
walkable within .25 mi of NBC Tower

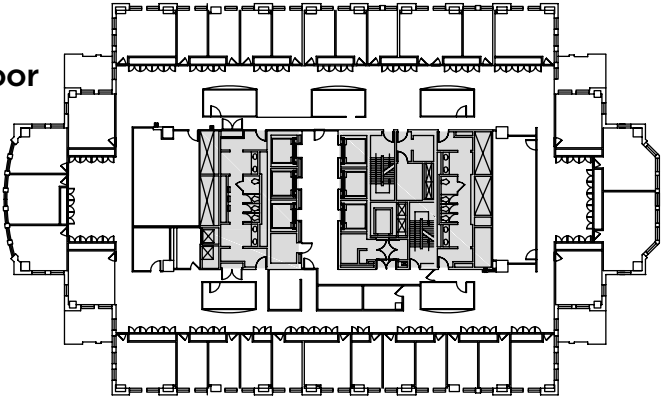


# Penthouse Floorplans

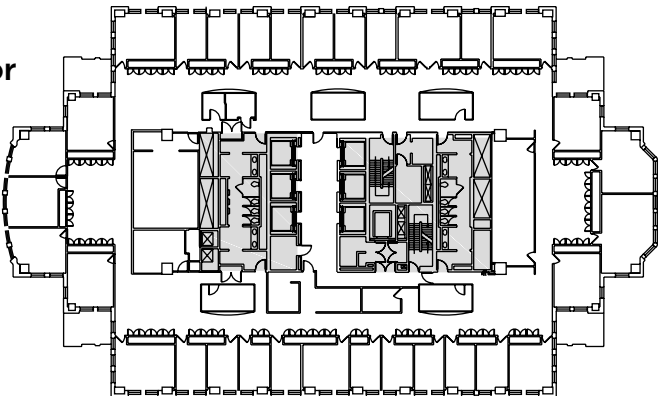
33rd Floor



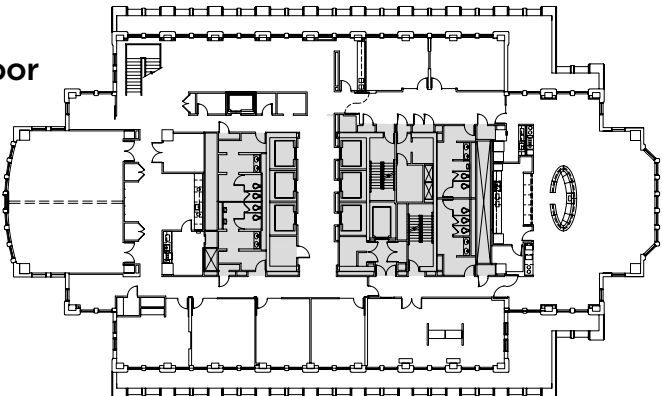
34th Floor



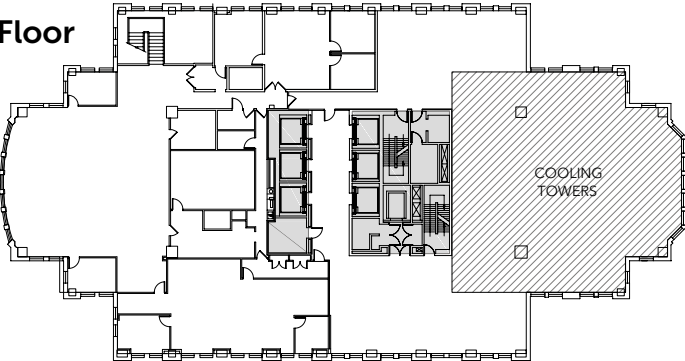
35th Floor



36th Floor



37th Floor



Mason Taylor  
+1 312 470 2337  
mason.taylor@cushwake.com

Karoline Eigel  
+1 312 470 2302  
karoline.eigel@cushwake.com

Paige Krueger  
+1 949 554 9643  
paige.krueger@cushwake.com

